

Master Project topic 2

If you are into looking into biological field observations Relationship between diatom/flagellate ratio and copepod lipids

The Sub-polar and polar ecosystems are lipid rich – mainly due to the fat copepods of the genus *Calanus*. They accumulate lipids to survive periods low/no food descending deep to diapause.

The question is how the food composition affects the lipid accumulation in the current natural environment

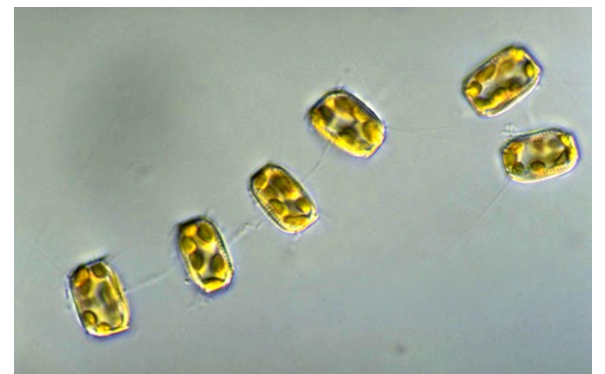
The project is based on already sampled data on phytoplankton composition to find diatom dinoflagellate ratios, and compare that to the lipid fullness of the lipid accumulating copepods from the same area.

The final focus will be finalized with the student – based on their interest.

Possibilities:

- Finding diatom and dinoflagellate data – from international colleagues – from satellite – pigment and counts
- Measure and make data base on lipid fullness of several arctic species
- Modelling (?)

This is new, and highly topical



Contact: Sigrun Jonasdottir
sjo@aqua.dtu.dk